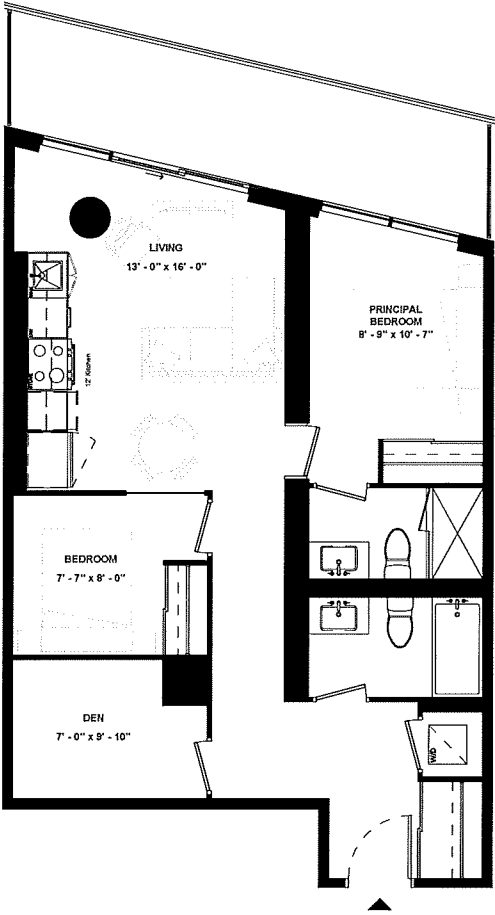
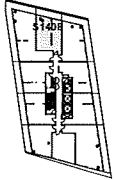


# SUITE 1508



SUITE TYPE: 2B+D  
 SUITE AREA: 798 SQFT  
 BALCONY / TERRACE: 137 SQFT



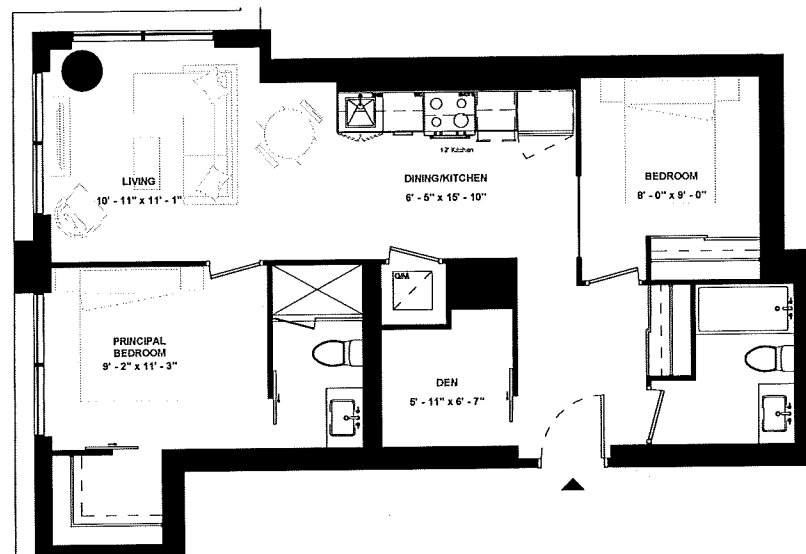
LEVEL 15



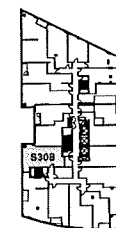
ISSUE DATE: 2023/06/02

Disclaimer: Drawings are not to scale. Materials, specifications, & floor plans are subject to change without notice. All renderings are artist's conceptions. All areas and stated room dimensions are approximate. Actual usable floor space may vary from the stated floor area. Floor area measured in accordance with Home Construction Regulatory Authority Directive, E.&O.E. Balcony sizes and configurations vary depending on floor level locations.

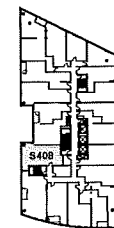
# SUITE 308 & SUITE 408 & SUITE 508



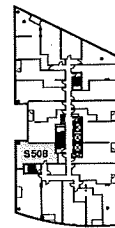
SUITE TYPE: 2B+D  
 SUITE AREA: 846 SQFT  
 BALCONY / TERRACE: N/A SQFT



LEVEL 03



LEVEL 04



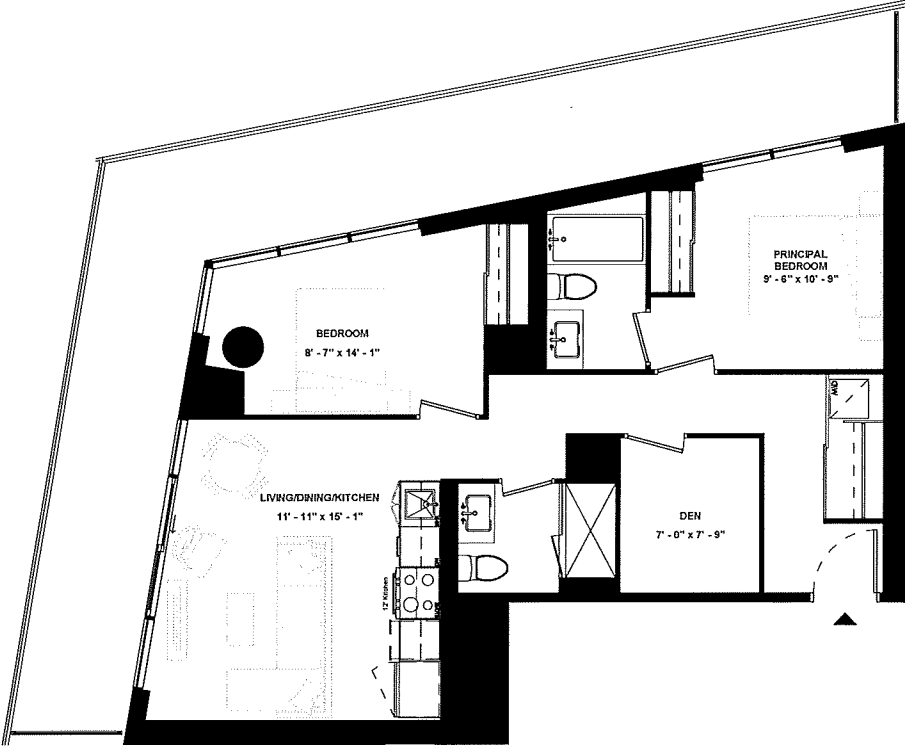
LEVEL 05

ISSUE DATE: 2023/06/02

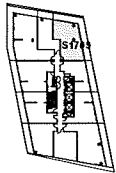


Disclaimer: Drawings are not to scale. Materials, specifications, & floor plans are subject to change without notice. All renderings are artist's conceptions. All areas and stated room dimensions are approximate. Actual usable floor space may vary from the stated floor area. Floor area measured in accordance with Home Construction Regulatory Authority Directive, E.&O.E. Balcony sizes and configurations vary depending on floor level locations.

# SUITE 1709



SUITE TYPE: 2B+D  
 SUITE AREA: 866 SQFT  
 BALCONY / TERRACE: 355 SQFT



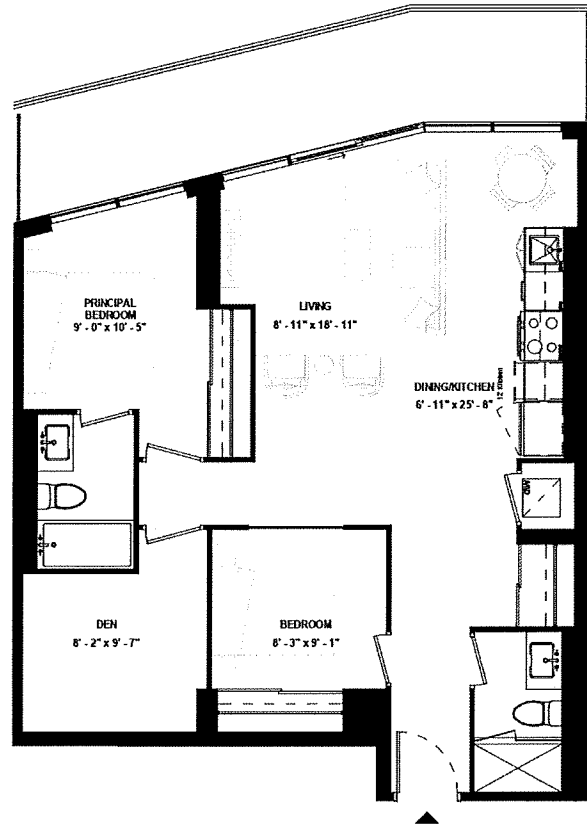
LEVEL 17



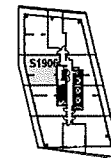
ISSUE DATE: 2023/06/02

Disclaimer: Drawings are not to scale. Materials, specifications, & floor plans are subject to change without notice. All renderings are artist's conceptions. All areas and stated room dimensions are approximate. Actual usable floor space may vary from the stated floor area. Floor area measured in accordance with Home Construction Regulatory Authority Directive. E.&O.E. Balcony sizes and configurations vary depending on floor level locations.

# SUITE 1906



SUITE TYPE: 2B+D  
SUITE AREA: 945 SQFT  
BALCONY / TERRACE: 167 SQFT



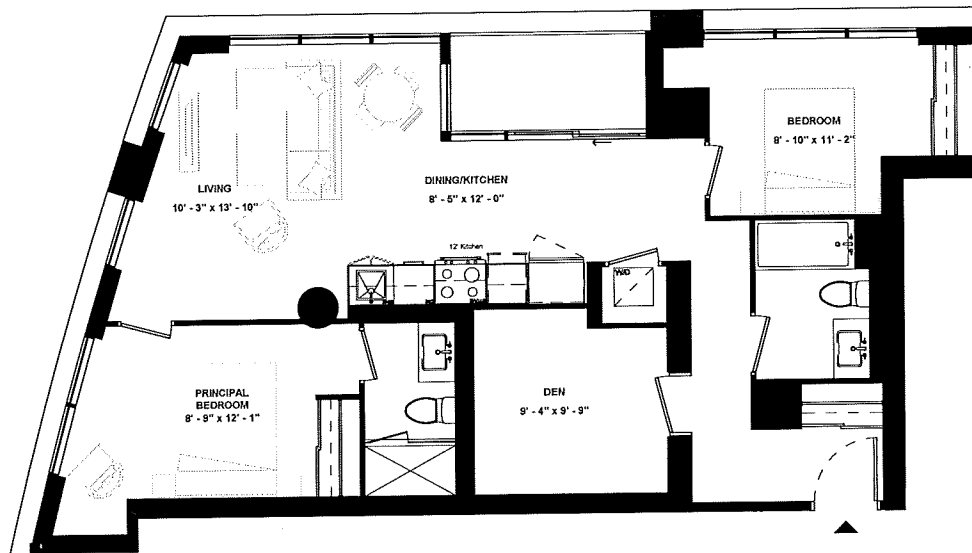
LEVEL 19



ISSUE DATE: 2023/06/02

Disclaimer: Drawings are not to scale. Materials, specifications, & floor plans are subject to change without notice. All renderings are artist's conceptions. All areas and stated room dimensions are approximate. Actual usable floor space may vary from the stated floor area. Floor area measured in accordance with Home Construction Regulatory Authority Directive, E.&O.E. Balcony sizes and configurations vary depending on floor level locations.

**SUITE 307 &  
SUITE 407 &  
SUITE 507**



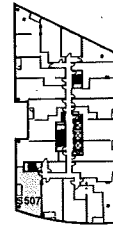
SUITE TYPE: 2B+D  
 SUITE AREA: 958 SQFT  
 BALCONY / TERRACE: 45 SQFT



LEVEL 03



LEVEL 04



LEVEL 05

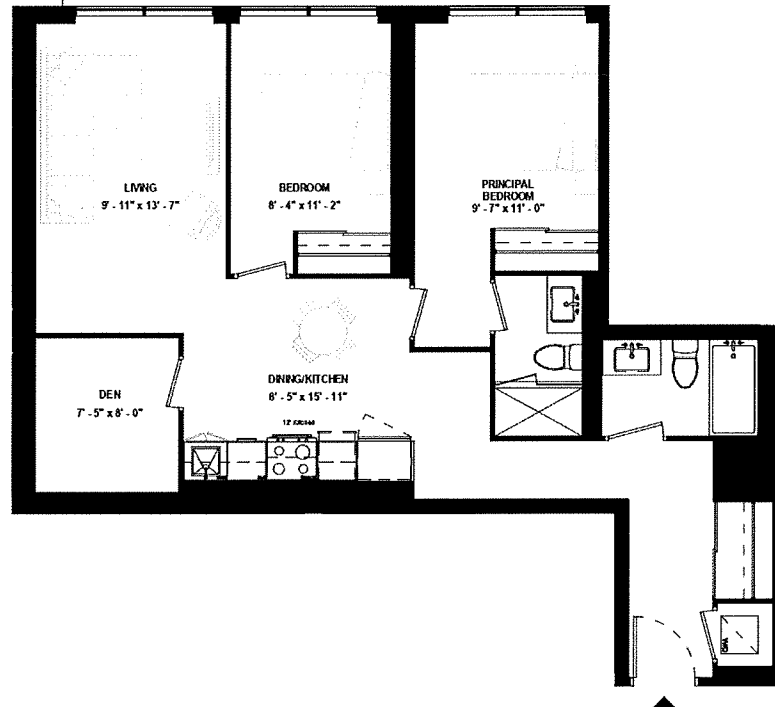


**HARHAY  
DEVELOPMENTS**

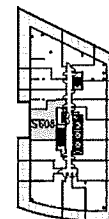
ISSUE DATE: 2023/06/02

Disclaimer: Drawings are not to scale. Materials, specifications, & floor plans are subject to change without notice. All renderings are artist's conceptions. All areas and stated room dimensions are approximate. Actual usable floor space may vary from the stated floor area. Floor area measured in accordance with Home Construction Regulatory Authority Directive. E.&O.E. Balcony sizes and configurations vary depending on floor level locations.

# SUITE 608



SUITE TYPE: 2B+D  
SUITE AREA: 963 SQFT  
BALCONY / TERRACE: N/A SQFT



LEVEL 06

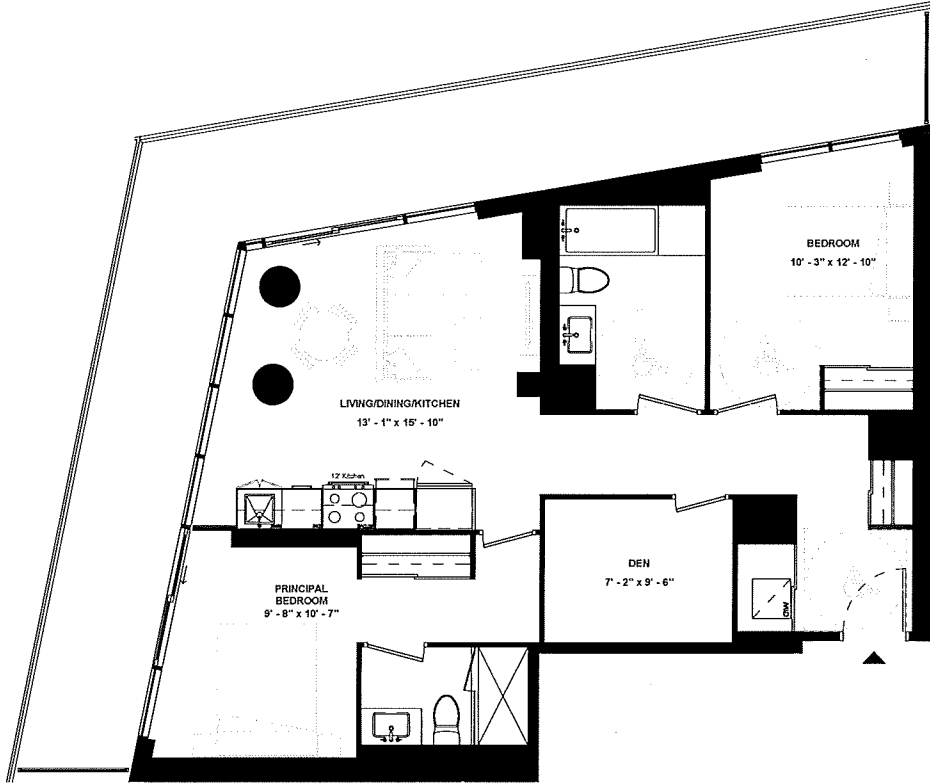


**HARHAY**  
DEVELOPMENTS

ISSUE DATE: 2023/06/02

Disclaimer: Drawings are not to scale. Materials, specifications, & floor plans are subject to change without notice. All renderings are artist's conceptions. All areas and stated room dimensions are approximate. Actual usable floor space may vary from the stated floor area. Floor area measured in accordance with Home Construction Regulatory Authority Directive, E & O.E. Balcony sizes and configurations vary depending on floor level locations.

**SUITE 1609**



SUITE TYPE: 2B+D (BF)  
 SUITE AREA: 977 SQFT  
 BALCONY / TERRACE: 370 SQFT

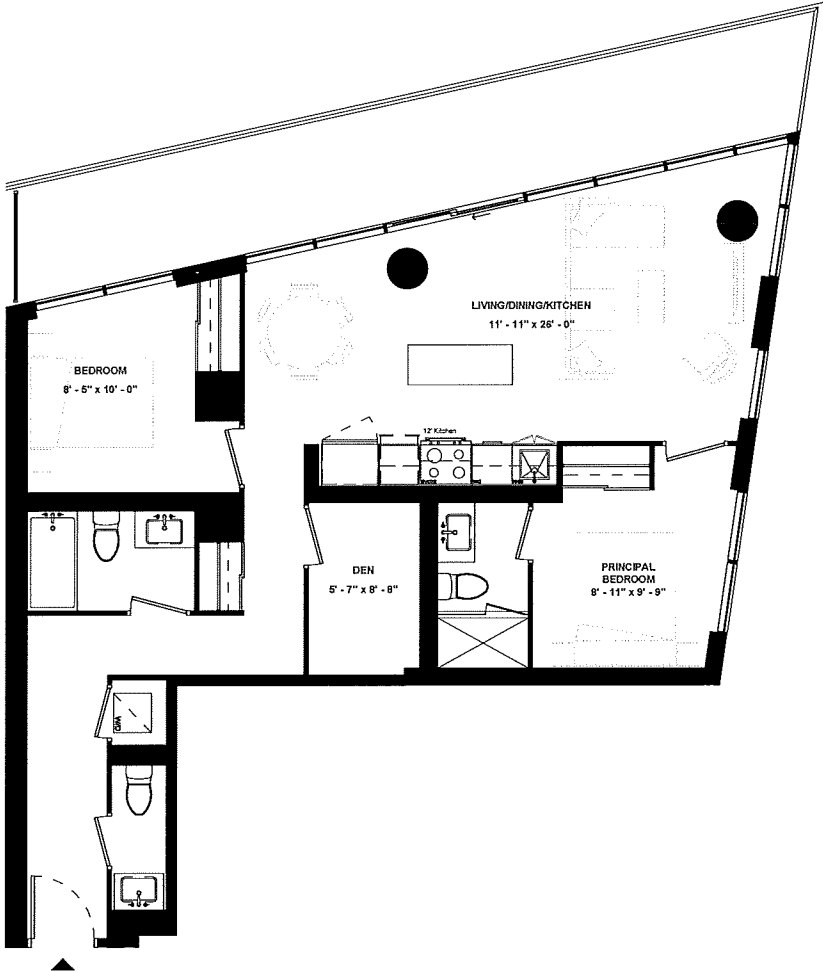


ISSUE DATE: 2023/06/02

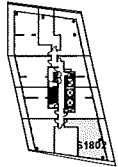
LEVEL 16

Disclaimer: Drawings are not to scale. Materials, specifications, & floor plans are subject to change without notice. All renderings are artist's conceptions. All areas and stated room dimensions are approximate. Actual usable floor space may vary from the stated floor area. Floor area measured in accordance with Home Construction Regulatory Authority Directive, E.50.E. Balcony sizes and configurations vary depending on floor level locations.

# SUITE 1802



SUITE TYPE: 2B+D  
 SUITE AREA: 978 SQFT  
 BALCONY / TERRACE: 223 SQFT



LEVEL 18

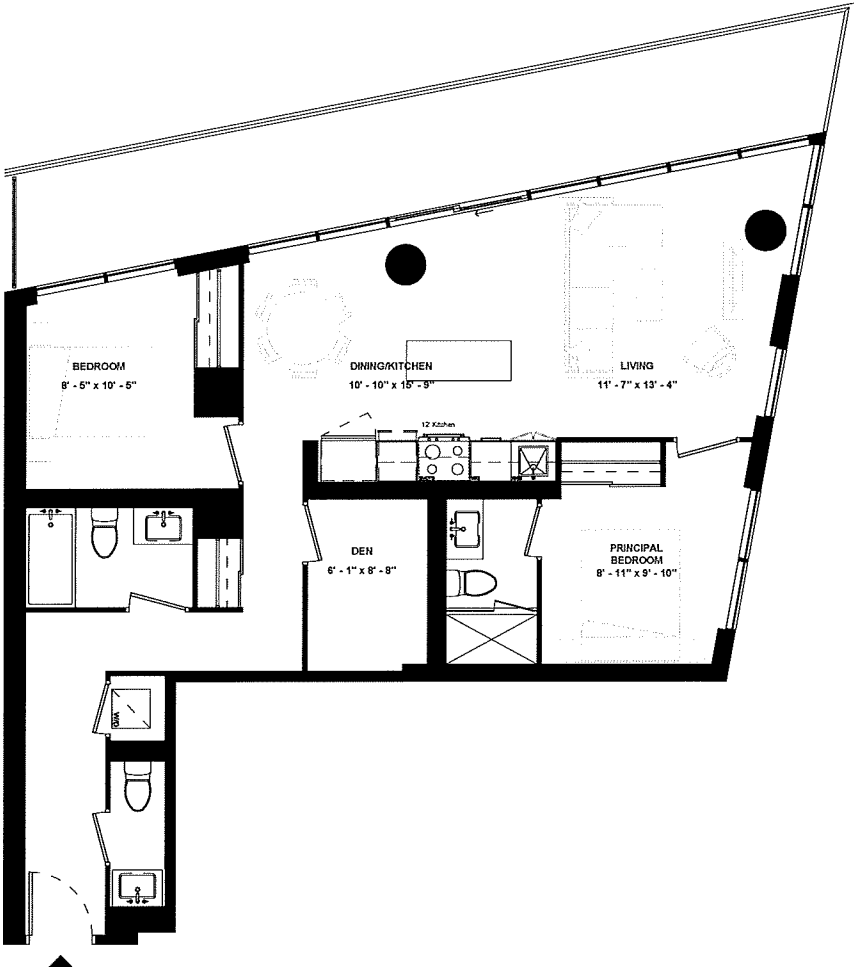


ISSUE DATE: 2023/06/02

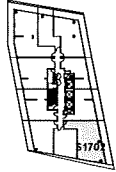
Disclaimer: Drawings are not to scale. Materials, specifications, & floor plans are subject to change without notice. All renderings are artist's conceptions. All areas and stated room dimensions are approximate. Actual usable floor space may vary from the stated floor area. Floor area measured in accordance with Home Construction Regulatory Authority Directive. E.&O.E. Balcony sizes and configurations vary depending on floor level locations.



**SUITE 1702**



SUITE TYPE: 2B+D  
 SUITE AREA: 1003 SQFT  
 BALCONY / TERRACE: 231 SQFT



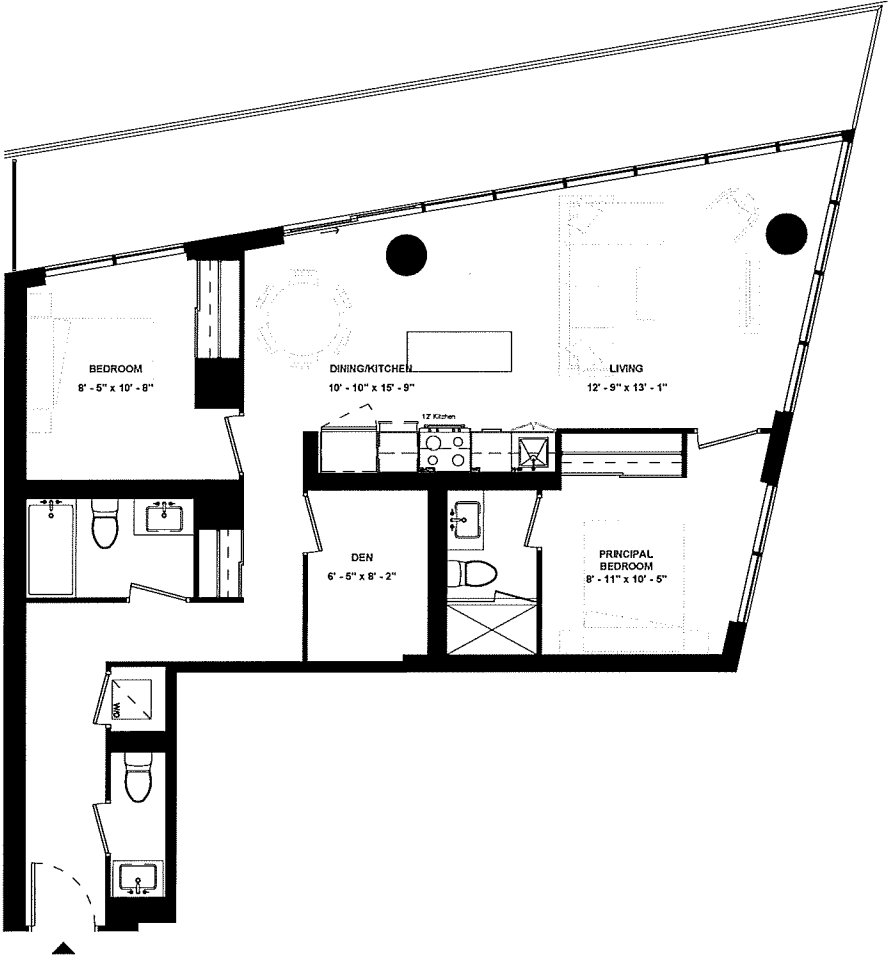
LEVEL 17



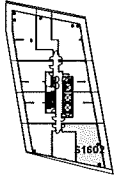
ISSUE DATE: 2023/06/02

Disclaimer: Drawings are not to scale. Materials, specifications, & floor plans are subject to change without notice. All renderings are artist's conceptions. All areas and stated room dimensions are approximate. Actual usable floor space may vary from the stated floor area. Floor area measured in accordance with Home Construction Regulatory Authority Directive. E.&O.E. Balcony sizes and configurations vary depending on floor level locations.

**SUITE 1602**



SUITE TYPE: 2B+D  
 SUITE AREA: 1027 SQFT  
 BALCONY / TERRACE: 238 SQFT



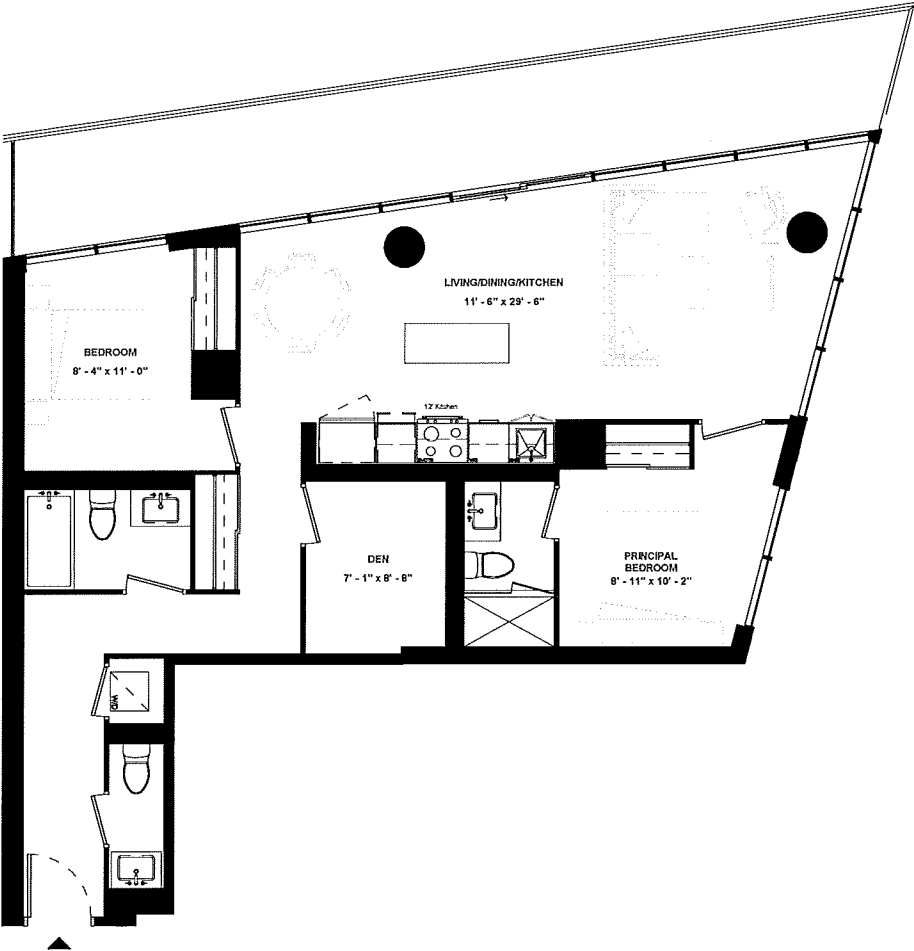
LEVEL 16



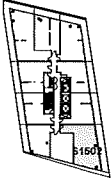
ISSUE DATE: 2023/06/02

Disclaimer: Drawings are not to scale. Materials, specifications, & floor plans are subject to change without notice. All renderings are artist's conceptions. All areas and stated room dimensions are approximate. Actual usable floor space may vary from the stated floor area. Floor area measured in accordance with Home Construction Regulatory Authority Directive. E.&O.E. Balcony sizes and configurations vary depending on floor level locations.

# SUITE 1502



SUITE TYPE: 2B+D  
 SUITE AREA: 1049 SQFT  
 BALCONY / TERRACE: 246 SQFT



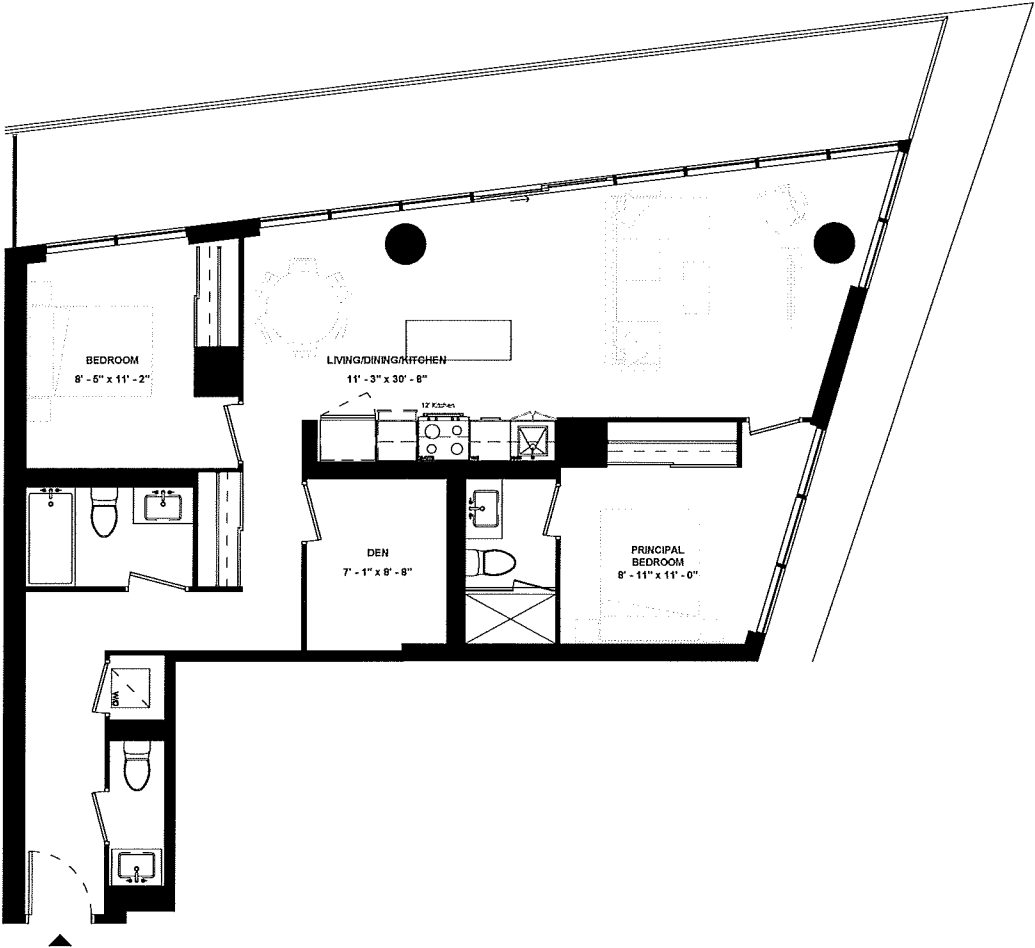
LEVEL 15



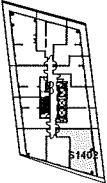
ISSUE DATE: 2023/06/02

Disclaimer: Drawings are not to scale. Materials, specifications, & floor plans are subject to change without notice. All renderings are artist's conceptions. All areas and stated room dimensions are approximate. Actual usable floor space may vary from the stated floor area. Floor area measured in accordance with Home Construction Regulatory Authority Directive. E.&O.E. Balcony sizes and configurations vary depending on floor level locations.

# SUITE 1402



SUITE TYPE: 2B+D  
 SUITE AREA: 1068 SQFT  
 BALCONY / TERRACE: 254 SQFT



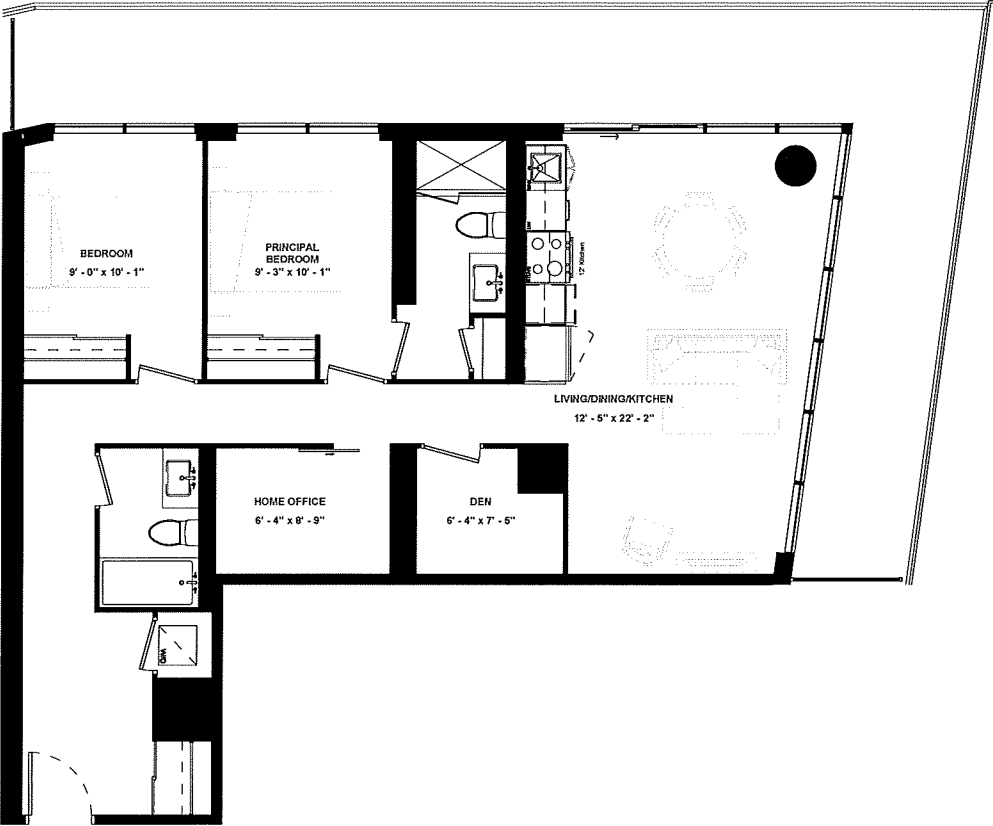
LEVEL 14



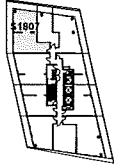
ISSUE DATE: 2023/06/02

Disclaimer: Drawings are not to scale. Materials, specifications, & floor plans are subject to change without notice. All renderings are artist's conceptions. All areas and stated room dimensions are approximate. Actual usable floor space may vary from the stated floor area. Floor area measured in accordance with Home Construction Regulatory Authority Directive. E.&O.E. Balcony sizes and configurations vary depending on floor level locations.

# SUITE 1807



SUITE TYPE: 2B+DEN+HOME OFFICE  
 SUITE AREA: 1072 SQFT  
 BALCONY / TERRACE: 394 SQFT



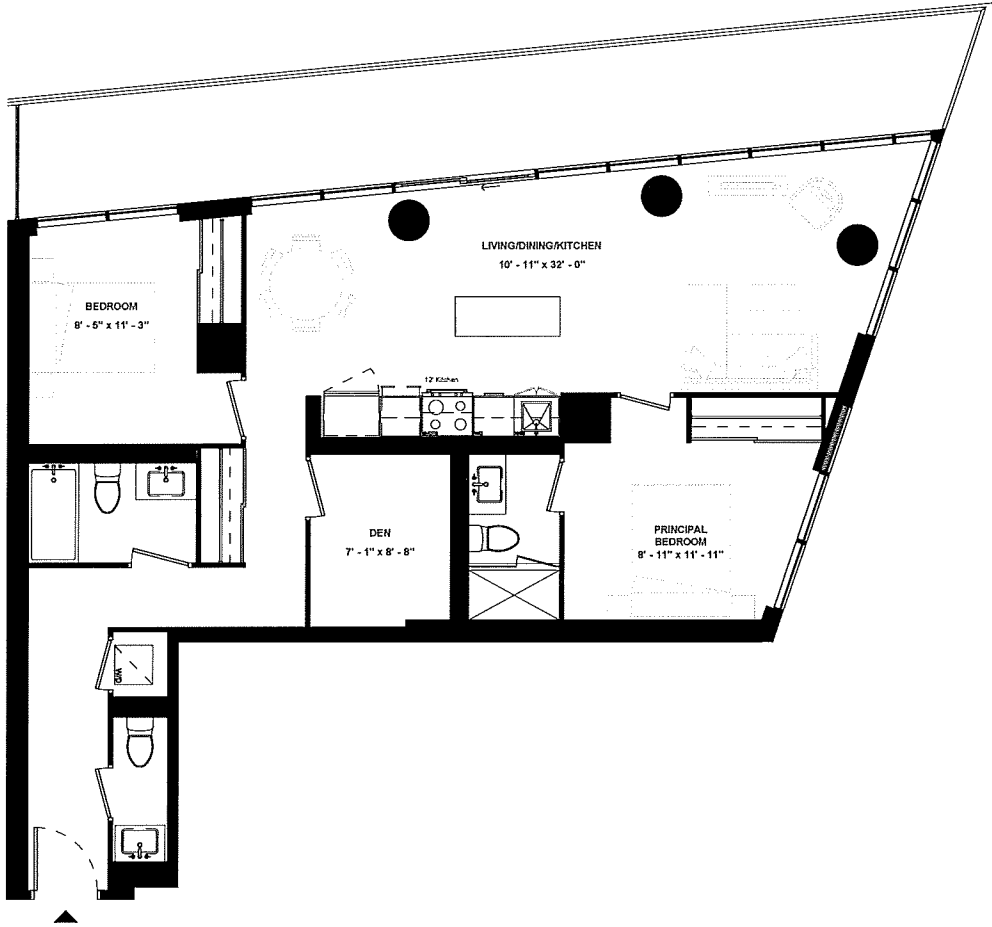
LEVEL 18



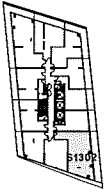
ISSUE DATE: 2023/06/02

Disclaimer: Drawings are not to scale. Materials, specifications, & floor plans are subject to change without notice. All renderings are artist's conceptions. All areas and stated room dimensions are approximate. Actual usable floor space may vary from the stated floor area. Floor area measured in accordance with Home Construction Regulatory Authority Directive, E.&O.E. Balcony sizes and configurations vary depending on floor level locations.

**SUITE 1302**



SUITE TYPE: 2B+D  
 SUITE AREA: 1083 SQFT  
 BALCONY / TERRACE: 262 SQFT



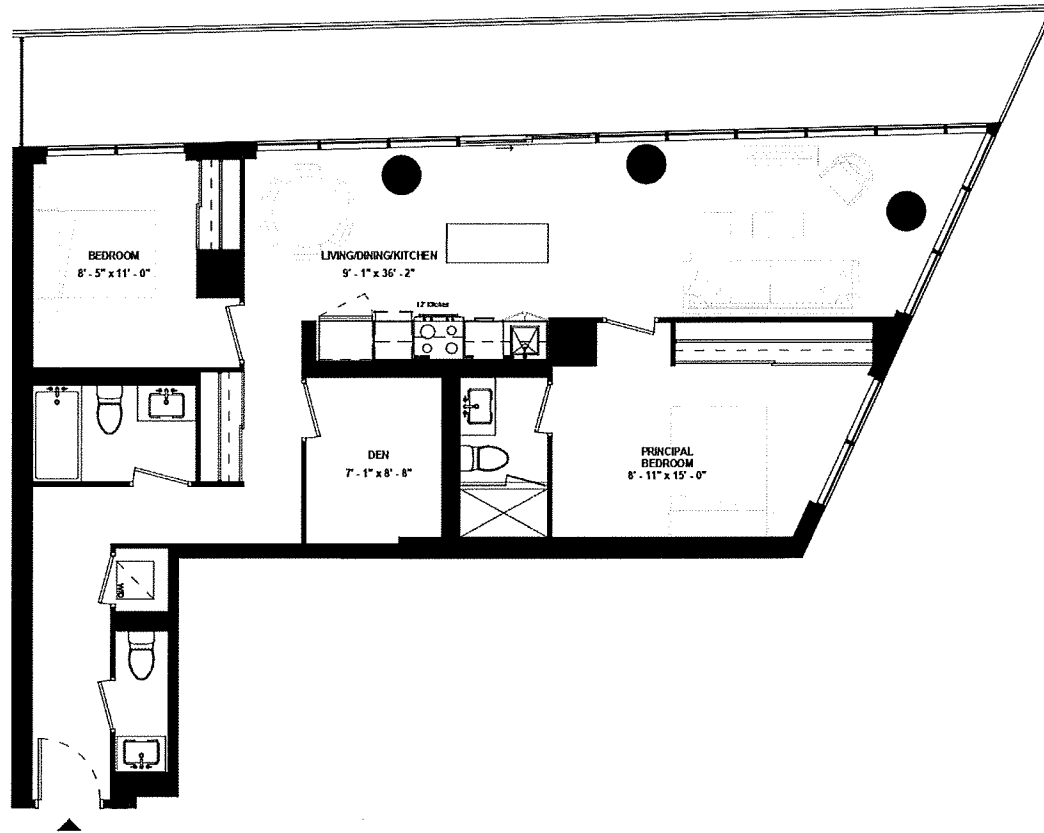
LEVEL 13



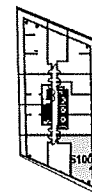
ISSUE DATE: 2023/06/02

Disclaimer: Drawings are not to scale. Materials, specifications, & floor plans are subject to change without notice. All renderings are artist's conceptions. All areas and stated room dimensions are approximate. Actual usable floor space may vary from the stated floor area. Floor area measured in accordance with Home Construction Regulatory Authority Directive, E.&O.E. Balcony sizes and configurations vary depending on floor level locations.

# SUITE 1002



SUITE TYPE: 2B+D  
SUITE AREA: 1095 SQFT  
BALCONY / TERRACE: 286 SQFT



LEVEL 10

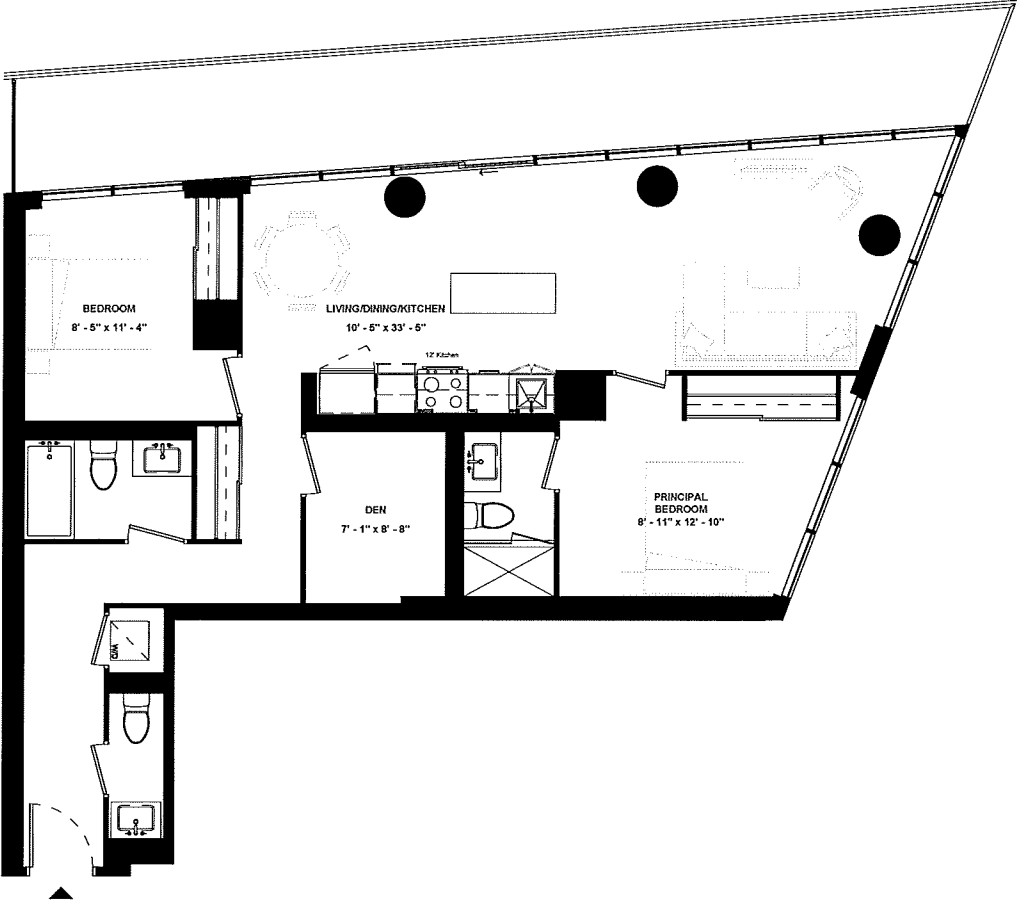


**HARHAY**  
DEVELOPMENTS

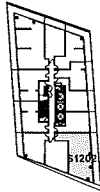
ISSUE DATE: 2023/06/02

Disclaimer: Drawings are not to scale. Materials, specifications, & floor plans are subject to change without notice. All renderings are artist's conceptions. All areas and stated room dimensions are approximate. Actual usable floor space may vary from the stated floor area. Floor area measured in accordance with Home Construction Regulatory Authority Directive. E.&O.E. Balcony sizes and configurations vary depending on floor level locations.

# SUITE 1202



SUITE TYPE: 2B+D  
 SUITE AREA: 1095 SQFT  
 BALCONY / TERRACE: 270 SQFT



LEVEL 12

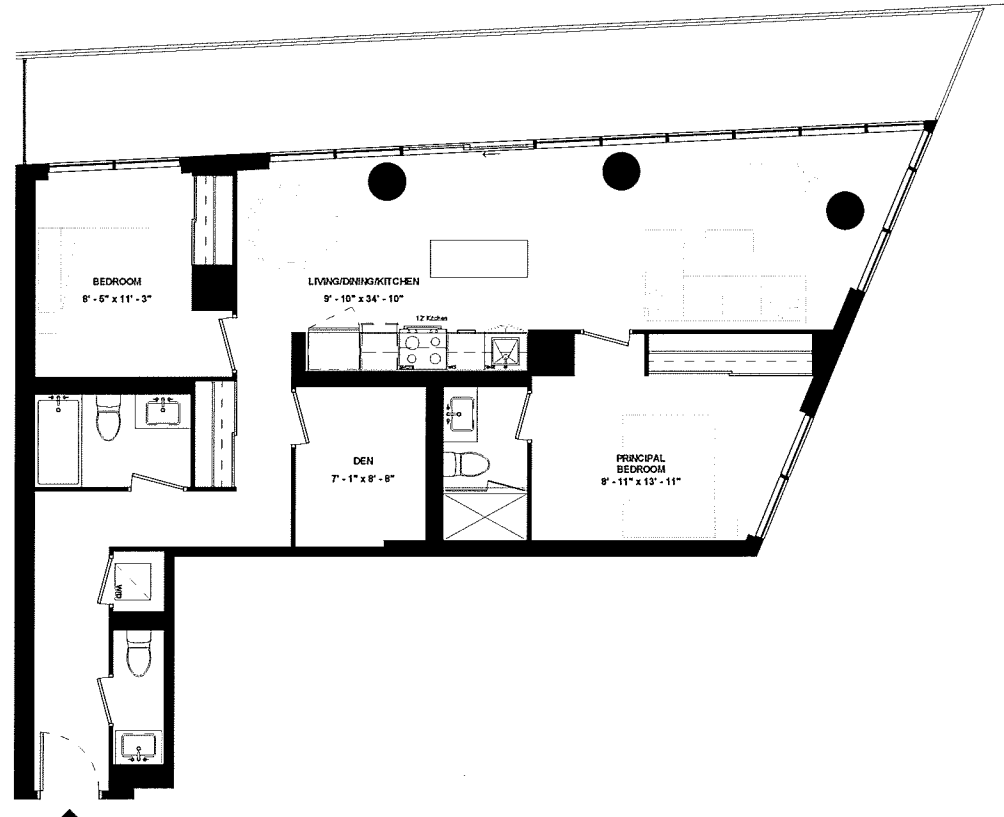


ISSUE DATE: 2023/06/02

Disclaimer: Drawings are not to scale. Materials, specifications, & floor plans are subject to change without notice. All renderings are artist's conceptions. All areas and stated room dimensions are approximate. Actual usable floor space may vary from the stated floor area. Floor area measured in accordance with Home Construction Regulatory Authority Directive. E.&O.E. Balcony sizes and configurations vary depending on floor level locations.



# SUITE 1102

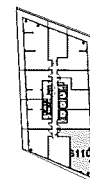


SUITE TYPE: 2B+D  
SUITE AREA: 1102 SQFT  
BALCONY / TERRACE: 278 SQFT



**HARHAY**  
DEVELOPMENTS

ISSUE DATE: 2023/06/02



LEVEL 11

Disclaimer: Drawings are not to scale. Materials, specifications, & floor plans are subject to change without notice. All renderings are artist's conceptions. All areas and stated room dimensions are approximate. Actual usable floor space may vary from the stated floor area. Floor area measured in accordance with Home Construction Regulatory Authority Directive. E.&O.E. Balcony sizes and configurations vary depending on floor level locations.